

To J. Frank Elsass

# SONATA

For Trumpet and Piano

Yamaha 1624

1 min

**Bb** Trumpet

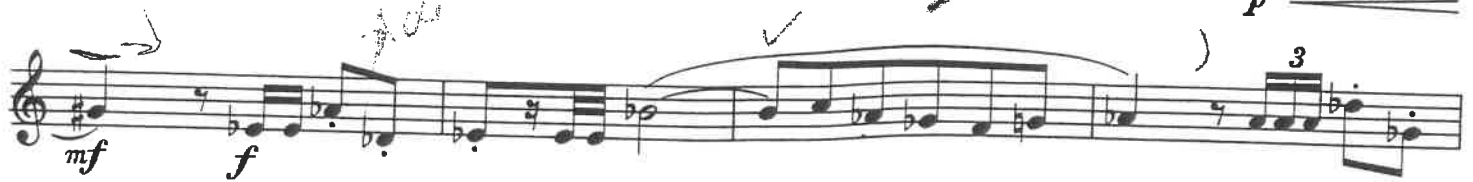
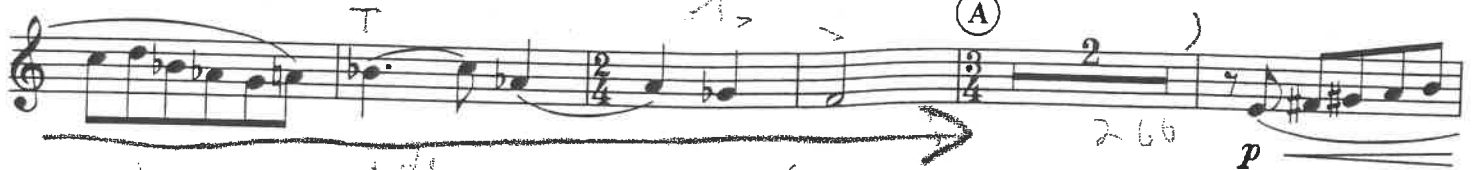
Play to Letter C

I

Band + Orchestra

By  
KENT KENNAN

123  
With strength and vigor  $\text{♩} = \text{about } 126$



in Bb Band + Orchestra

# Studies

Trumpet p. 2 (~~of 2~~)

## 1. MAD, LITTLE, BAND

Vite

Musical score for 'MAD, LITTLE, BAND' in 2/4 time. The score consists of five staves of music. The first staff begins with a dynamic marking of *p* and includes the word 'Vite' above it. The music is characterized by rapid sixteenth-note passages. The second staff has a dynamic marking of *f*. The third staff has a dynamic marking of *p*. The fourth staff has a dynamic marking of *f*. The fifth staff ends with a double bar line and a dynamic marking of *f*. There are several 'trumpet' markings above the notes.

1st 25 measures

## SYMPHONY No. 5

in 2 in Bb

I. Pesante  $\text{♩} = 60$

GUSTAV MAHLER  
(1860 - 1911)

Musical score for the first 25 measures of the first movement of Gustav Mahler's Symphony No. 5. The score is for the first trumpet part in Bb. It is in 2/2 time and marked 'I. Pesante' with a tempo of 60 beats per minute. The score is divided into two systems. The first system contains the first 15 measures, starting with a dynamic of *p* and featuring triplet patterns. The second system contains the next 10 measures, starting with a dynamic of *ff* and including a triplet marked 'molto'. The score concludes with a dynamic of *p* and a 'cresc.' marking. There are handwritten annotations and a large diagonal line drawn across the score.

# SYMPHONIE No. 5.

MICHIGAN AVENUE p. 3  
CHICAGO, ILL.

Dmitri Schostakowitsch, op. 65

2 in B<sup>b</sup> Orchestra

Tromba I (B<sup>b</sup>)

27 Poco sostenuto

28

29

30 poco stringendo poco meno f cresc.

Band and orchestra

3 107 108 Più mosso

109

f cresc.

# Verdi Requiem

P. 4

Orchestra

## Nr. 4. Sanctus

TRUMPET IN C

Allegro (♩ = 138)

in C

624 *Largo* (♩ = 60) *Sopr. Solo* *dolcissimo* *pp*

17 Hu - ic - er - - - go par - ce De - - us.

625 Solo in E♭

647

652 *animando un poco* *VI.I* *pp*

3 2 1

660

Allegro (♩ = 112) *VI.I* *in C* *Solo* *mf*

13

81

41 *13* *VI.I* *poco f*

63

74 *48* *VI.I* *f* *ff* *sfz*

181 *40* *8*